

Dan Gould - Executive Director



New Hampshire Snowmobile Association

Volunteer Driven



**NHSA
Founded in
1969**

NHSA

Purpose

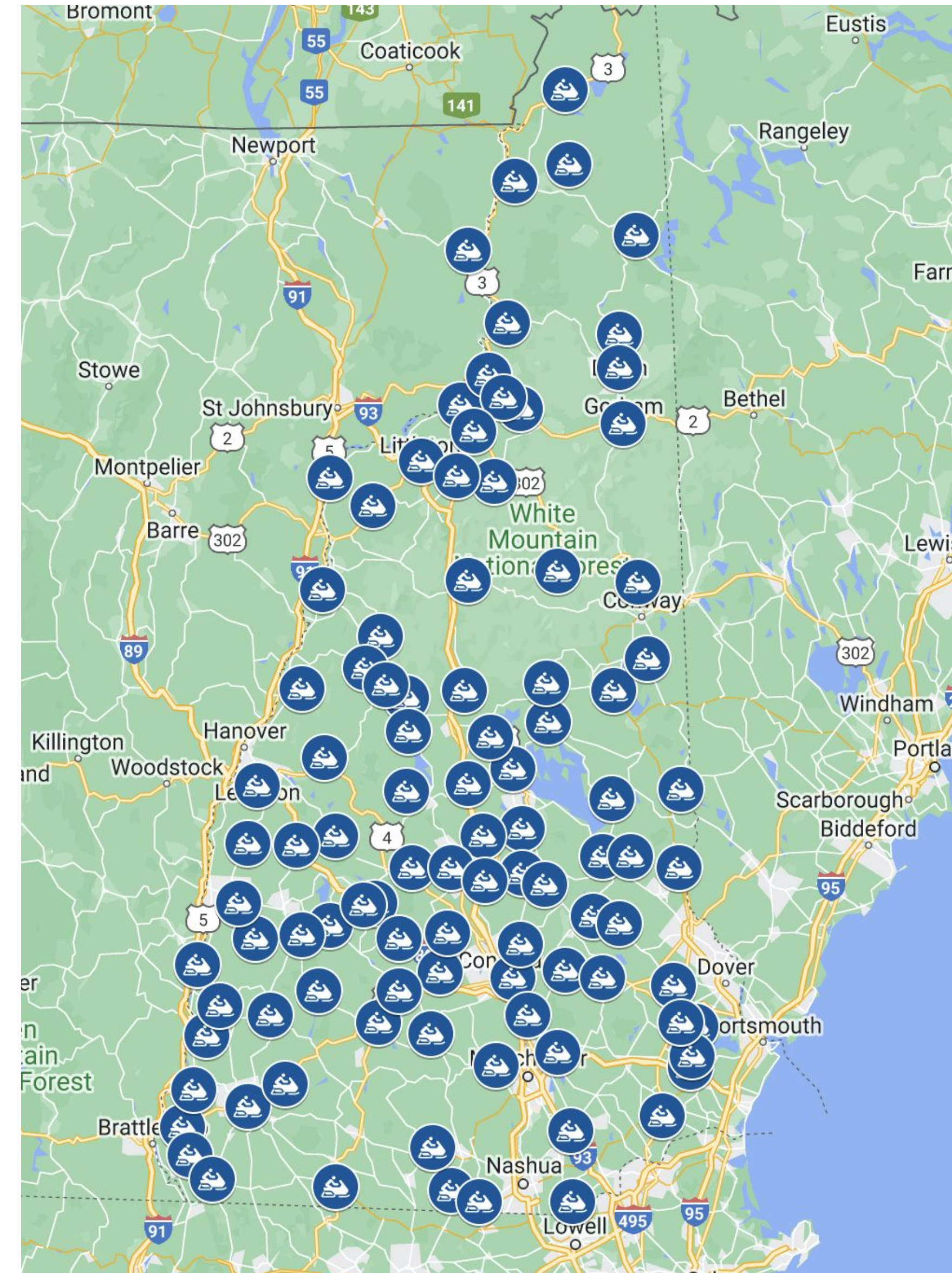
- To promote and foster snowmobiling as a sport and recreation for its members.
- To create and maintain a map of the system of trails for the use of snowmobiles.
- To exchange ideas, trail information, group activities and information pertinent to the welfare of snowmobiling.
- To educate its members on good conduct, sportsmanship, safety and conservation practices.
- To promote snowmobile tourism in New Hampshire.



Structure

Local Clubs

- 100 independent clubs
- Volunteer managed & operated
- Small core of leaders
- Organized by county
- Lifeblood of snowmobiling!



Structure

Association

- NHSA Board of Directors
- Club representation
- 20 directors + 1
- 5 officers
- 2 full-time employees
- 100% self-funded
- Meet monthly, year round

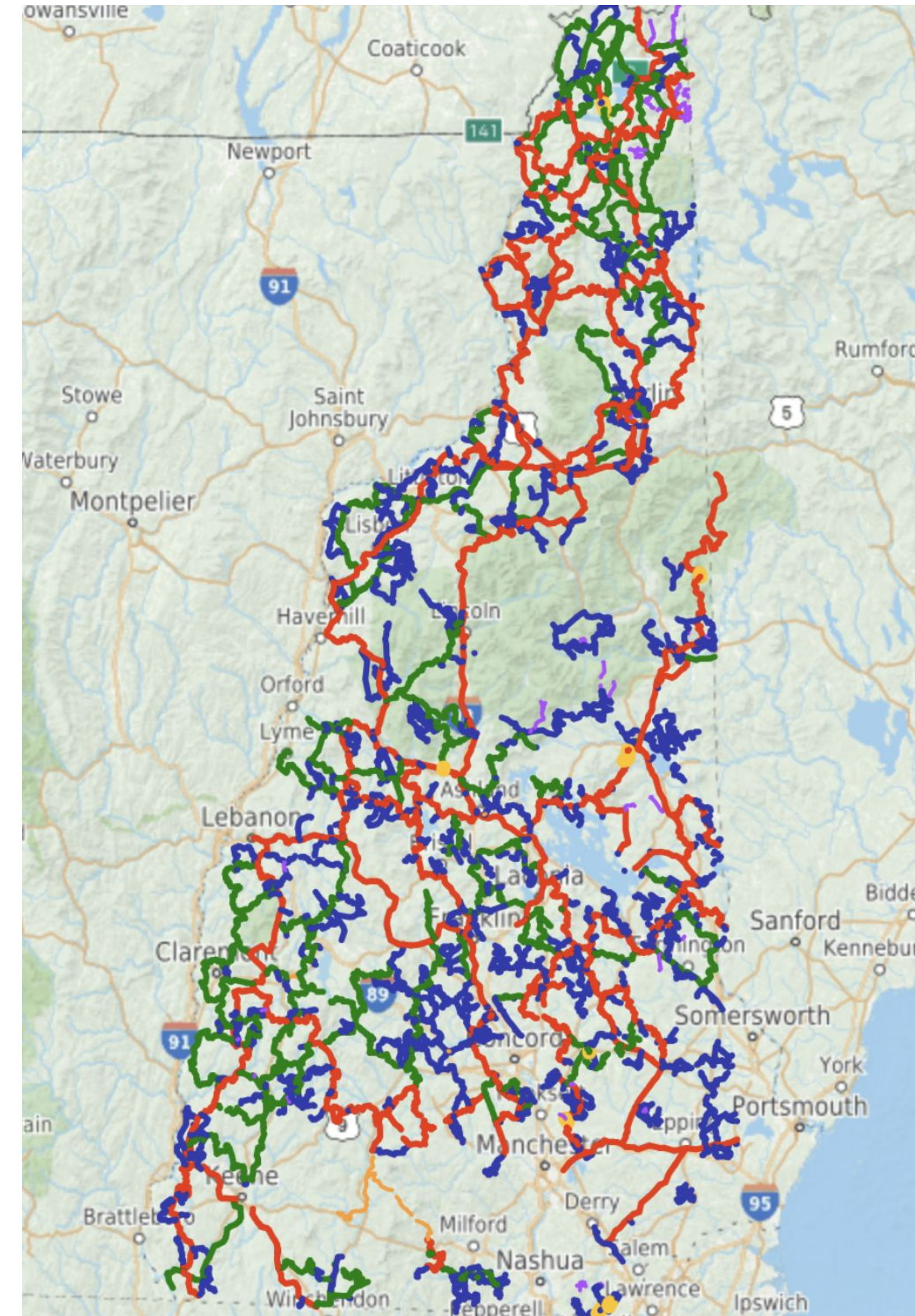




NHSA Trail System



- 7,000 miles of trails
- 300 groomers
- Interconnected to bordering states and provinces.
- Majority of grooming and trail infrastructure undertaken by club volunteers.
- Approximately 28,000 hours of club trail grooming takes place annually - by volunteers.



A person wearing a black jacket and helmet is riding an orange and black snowmobile on a snowy trail. The trail is surrounded by a dense forest of bare trees. In the background, a large white wind turbine stands on a hill. The sky is overcast.

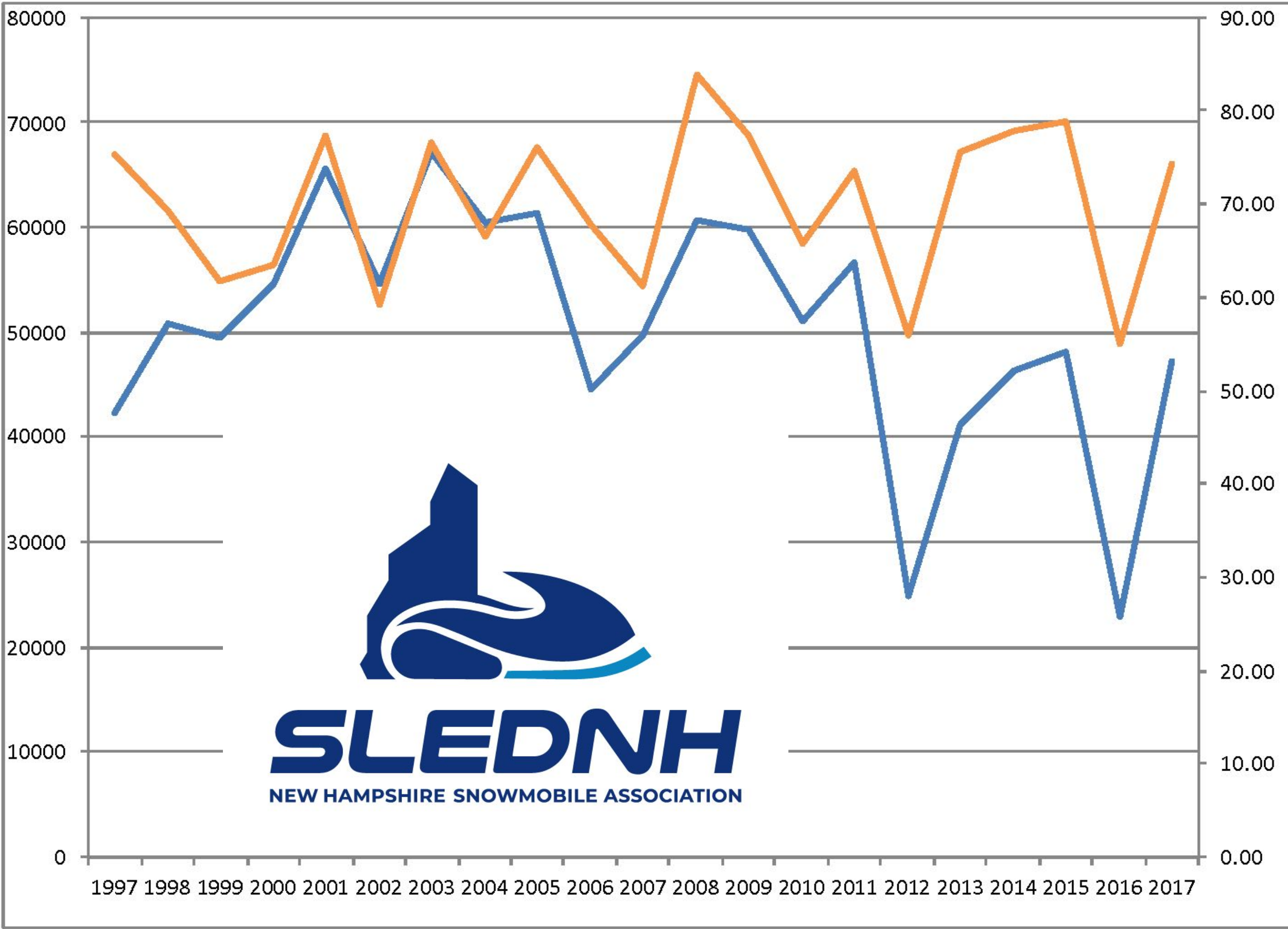
NH Data

• 45,000 Registered Snowmobiles

- 70% Residents

- 20,000 NHSA Club Members

NH Snowmobile Registrations

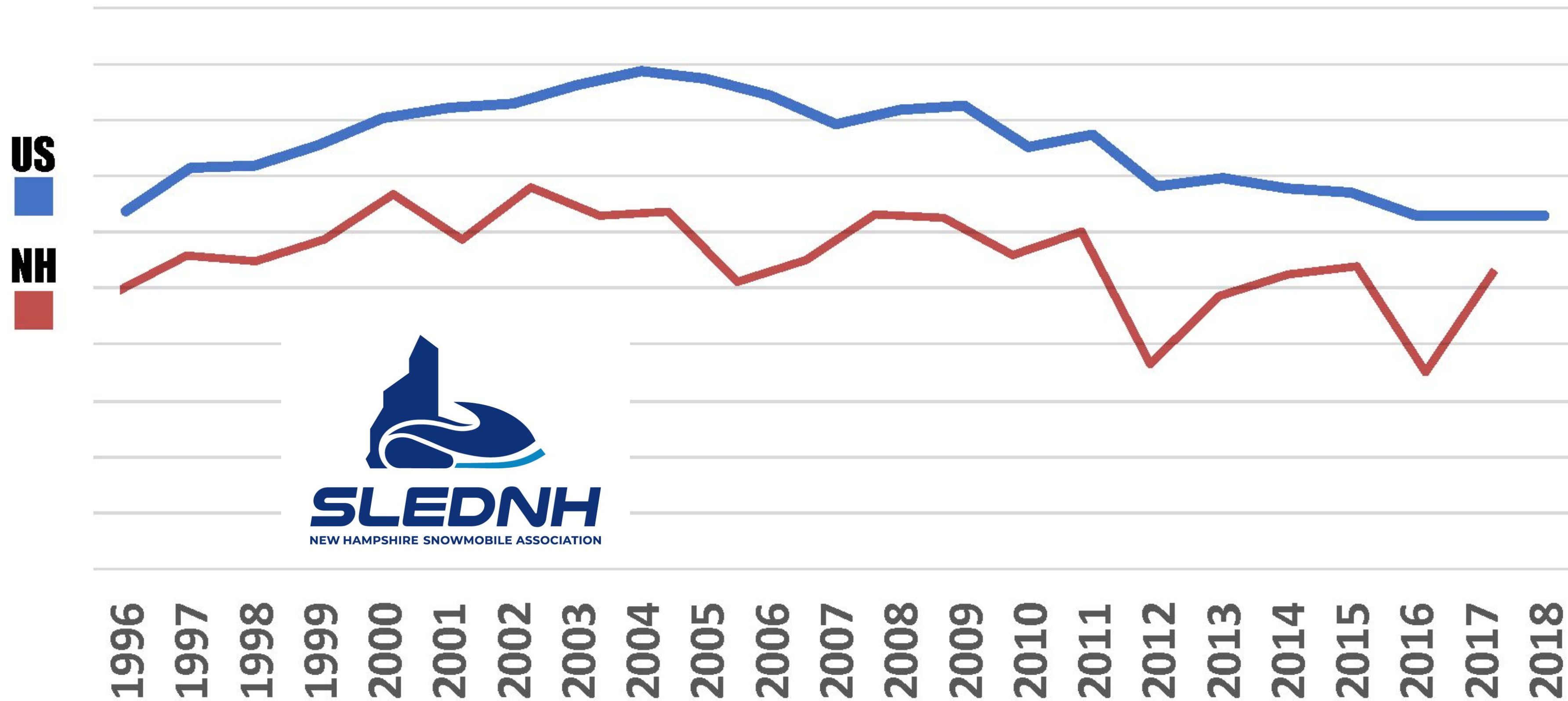


Winter Severity Index

Snowmobile Registrations

Snowmobile Registration Trends

New Hampshire vs. United States



Data reflects trends, not a comparison of equal values.

National Data

Sales & Registrations - 2023

- 124,769 snowmobiles sold worldwide
- 53,553 sold in the U.S.
- 48,252 were sold in Canada
- 1.26 million registered snowmobiles in the US
- 601,000 registered snowmobiles in Canada



National Data

Economic Impact - 2023

- United States—\$26 billion annually
- Canada—\$9.3 billion annually
- Europe—\$4 billion annually
- New Hampshire \$816 million*
- Over 100,000 full-time jobs generated in North America
- Manufacturing, dealerships and tourism related businesses



*2011 Plymouth State EIS study adjusted for inflation

National Data

Snowmobilers...

- Average age is 54 years old
- Average spend is \$2,500 per year
- 50% trailer snowmobiles to ride
- 50% ride from residence or vacation home
- 3,000+ clubs worldwide
- Raise \$3 million+ in charity annually
- NHSA has raised \$3.7 million+ for Easterseals since 1972



Why Snowmobile?





- Quality time with family and friends
- Get outdoors and be active
- Escape the daily grind
- Connect with nature
- Go places otherwise unreachable
- Make winter even more fun



Physical Activity

Study by University of Guelph, Ontario

- Casual snowmobiler uses 5.6 times as much energy as watching TV
- Comparable to downhill skiing or snow shoveling
- Snowmobiling categorized as moderate intensity physical activity



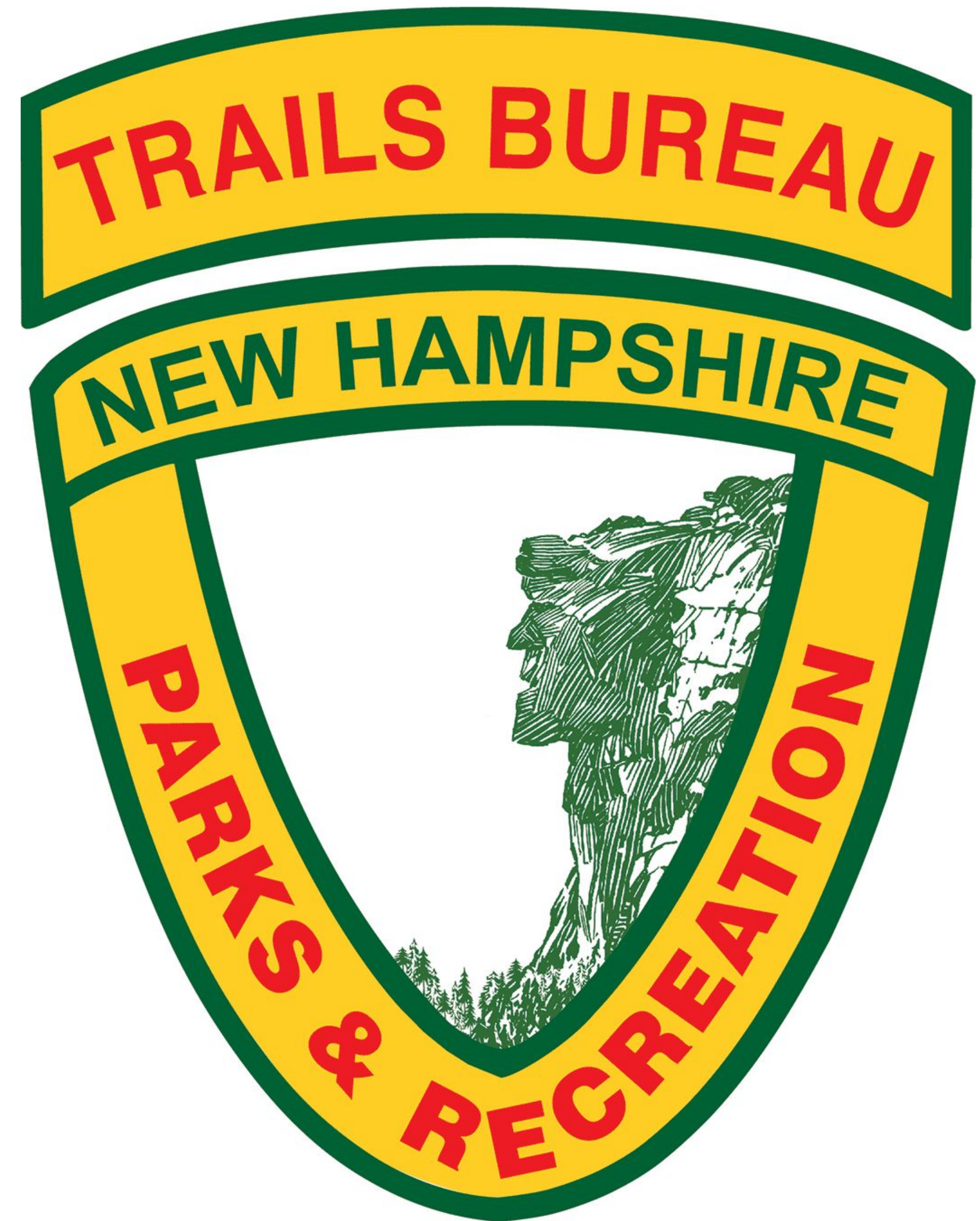


Partnership
s

Partnerships

Bureau of Trails

- Registrations help fund agency
- Grant In Aid program
- Landowner relations
- Education and training
- Grooming
- Mapping effort



Partnerships

Fish and Game

- Registrations help fund agency
- Safety training program
- Public outreach/education
- Events
- Landowner Relations
- Enforcement



Partnerships

User Groups

- Twin State Rail-Trail
- Cotton Valley Rail Trail Club
- Friends of Pondicherry
- Central NH Trails Roundtable
- Lakes Region Sled Dog Club
- Cyclists, hikers, community groups



Partnerships

Opportunities

- Coordinate longterm planning
- Joint project funding and execution
- RTP diversified project funds
- Match in-kind assistance
- Fundraising coordination
- Trail infrastructure and maintenance
- NHSA Grass Drags



FAQ



Can We Use Your Trails?

- NHSA does not own trails
- Majority of trails on private property
- Clubs gain landowner permission for *snowmobiles*
- Snowmobile trails often disappear after snow melts
- Unauthorized and off-trail use is major cause of closures across North America



**PLEASE
STAY ON
TRAIL**



Landowner Protections?

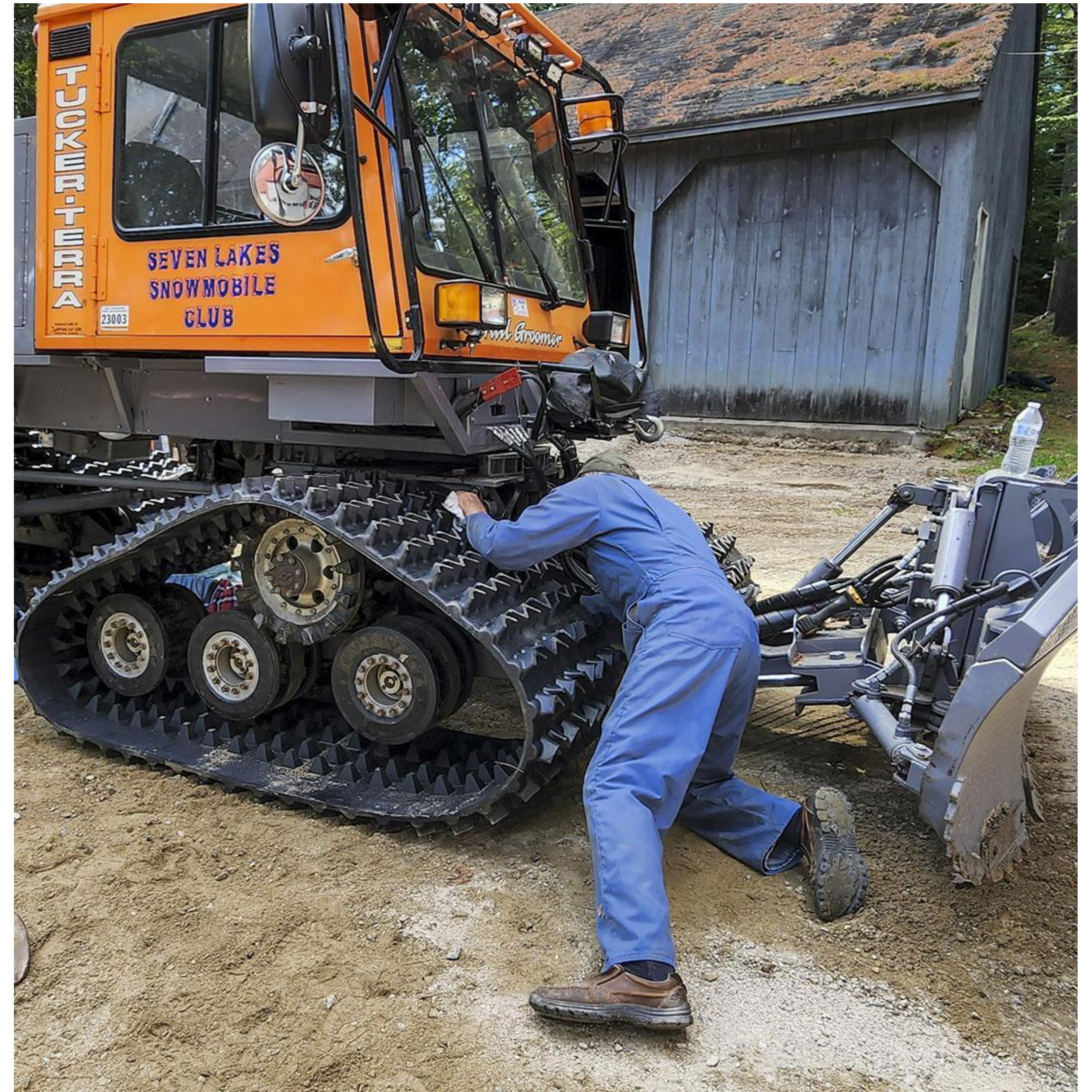
- RSA 212:34 DUTY OF CARE - Covers diverse uses of property use, ranging from sight-seeing to snowmobiling.
- Laws challenged in courts but continue to remain intact and proven in their ability to afford landowners liability protections.
- NH, Bureau of Trails provide all registered landowners, that allow public snowmobile and/or off highway recreational vehicle (OHRV) trails on property, a Commercial General Liability Insurance policy.



Club Resources?

Limited Volunteers and Funding

- 3-10 dedicated leaders per club
- Club overhead is staggering
- Some budgets exceed \$1-million!
- Volunteers aging out
- Riders assume state manages trails
- Volunteer or pay higher fees?



What Does NHSA Do?

Office and Committees Support

- Provide central communications hub for clubs, members, public, media...
- Engage with agencies, landowners, businesses and other organizations
- Undertake big-picture projects
- Engage with lobbyist and monitor legislation
- Host major events and fundraisers
- Manage digital trail map and app
- Host online membership system
- Publish magazine and website
- Offer club insurance program





Fundin

g Registration, GIA, Membership, RTP,
Fundraising

Registrations

Established - Accepted

- Pay to play recreation
- Legislated by snowmobilers for snowmobilers
- User fees across US & Canada
- Programs vary state-to-state
- Least expensive part of snowmobiling



NH Snowmobile Registration Fees

2023-2024	Resident	Non-Resident
Snowmobile (Club Member)	\$121	\$131
Snowmobile (Non-Member)	\$151	\$161

Registration Discount

NHSA Club Membership Registration Discount

- National model
- Members get \$30 reg discount
- Encourages membership
- User directs funds to chosen club



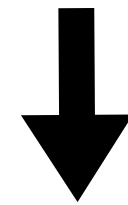
Registration Dollars

- 100% for snowmobile program
- No tax dollars fund program
- How are funds allocated?

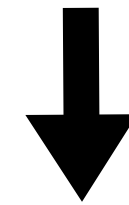


Snowmobile Registration

Resident - Club Member - Total Fee
\$121.00



Agent/Transaction Fee
\$5.00/\$7.00



Fish & Game Search and Rescue
\$1.00

\$95.00



Trails Bureau

- Grant In Aid
- Operations
- Maintenance



\$18.00

Fish & Game

- Registration Program
- Law Enforcement
- Safety Education

Grant In Aid - GIA

Managed by Bureau of Trails

- GIA provides assistance to OHRV and snowmobile clubs for projects
- Development, maintenance, construction, grooming, grading, and safety of public use
- Funding for program derived from registrations and un-refunded gas taxes
- Dedicated funds, cannot be utilized for any other purpose.



Grant In Aid - GIA

Managed by Bureau of Trails

- Funding varies with annual income
- Approximately \$3.5 million annually for snowmobile program.
- Covers summer and winter projects
- Typically covers 50% of club overhead - varies club-to-club



RTP

Managed by Bureau of Trails

Portion of federal fuel tax collected from recreational fuel use

NH 2024 RTP grants by category:

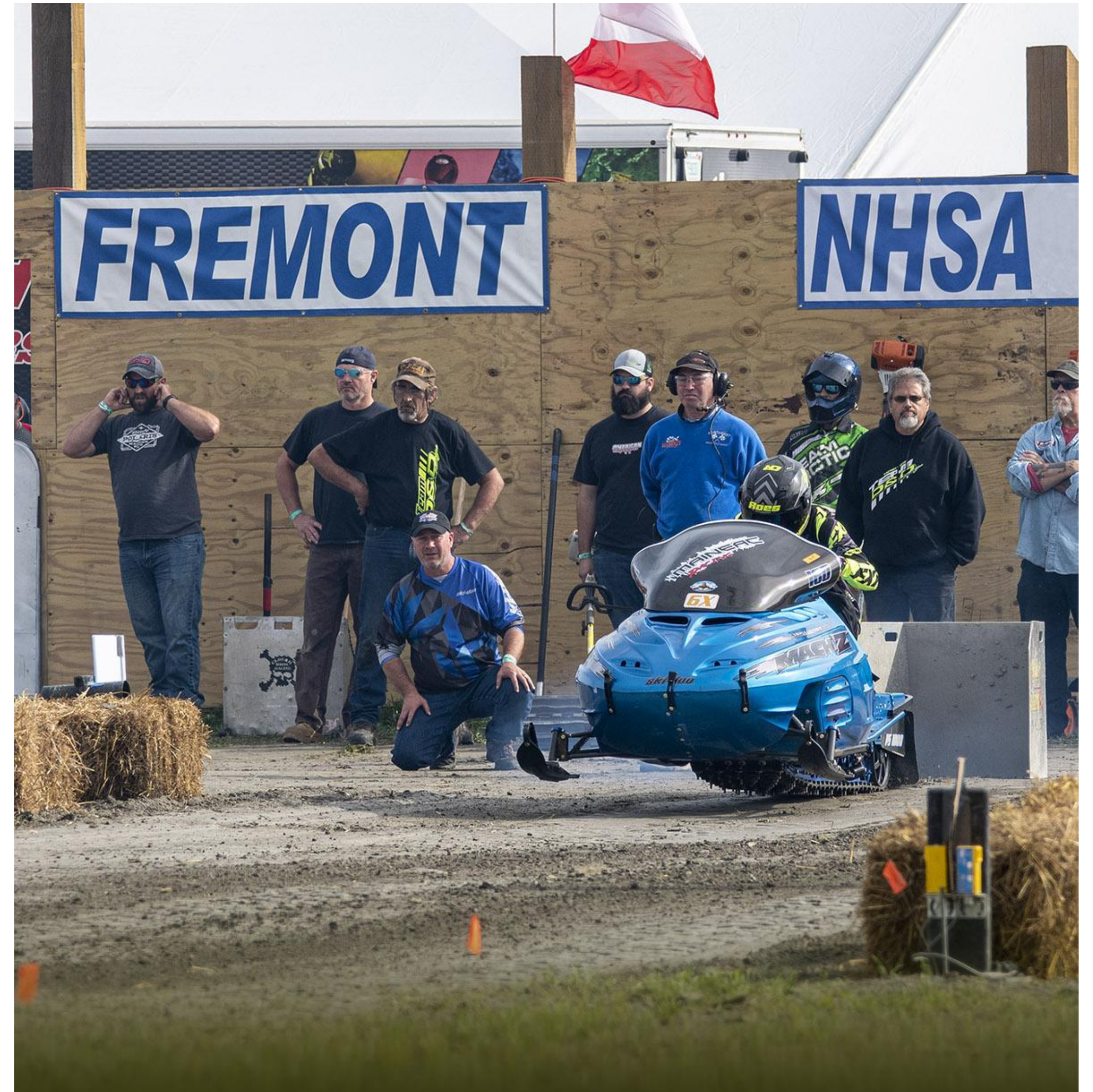
- Motorized - \$349,952.70 (30%)
- Diversified - \$466,603.60 (40%)
- Non-Motorized - \$349,952.70 (30%)



Fundraising

Clubs and NHSA

- Clubs and NHSA invest significant time fundraising
- NHSA Grass Drags attracts 47,000 attendees annually. Major fundraiser for Association and clubs
- NHSA Super Raffle is popular
- Members make generous donations





SLEDNH
Thank
You!

